



# Keeping the CRAB at bay: myeloma exposed

**Monday 24th April 2017**

Education Centre (Dept. 17), The Christie, Manchester, M20 4BX

## Overview

The day will provide an overview of myeloma management and discuss the most common clinical manifestations of multiple myeloma as summarized by the acronym, "C.R.A.B".

C = Calcium (elevated), R = Renal failure,

A = Anaemia, B = Bone lesions

## Further information

Fee **£90**

Visit **[www.christie.nhs.uk/SoO](http://www.christie.nhs.uk/SoO)**

Register **<https://ct-myeloma.eventbrite.co.uk>**

Email **[education.events@christie.nhs.uk](mailto:education.events@christie.nhs.uk)**

Call **0161 918 7409**

Tweet **@TheChristieSoO**

## Intended Audience

Nursing and other allied health professionals looking after Haematology patients.

# Keeping the CRAB at bay: myeloma exposed

## Introduction

The day will provide an overview of myeloma management and discuss the most common clinical manifestations of multiple myeloma as summarized by the acronym, "C.R.A.B".

C = Calcium (elevated), R = Renal failure, A = Anaemia, B = Bone lesions

## Topics covered

- Diagnosis
- Treatment options including radiotherapy and clinical trials in myeloma
- Managing myeloma from a cardiology perspective
- Managing myeloma from a nephrology perspective
- Managing anaemia in myeloma from a transfusion perspective
- Managing bone health
- Managing myeloma from an out-patient perspective
- The art of adherence to medication
- Case studies

## Learning outcomes

The day will expand on basic and intermediate levels of knowledge of caring for haematology patients which can then be applied in the clinical environment

## Aim/Objective

To gain specific knowledge on how to treat C.R.A.B (Calcium, Renal, Anaemia, Bone Health) from a multidisciplinary perspective.

## Further information

Fee **£90**  
Visit [www.christie.nhs.uk/SoO](http://www.christie.nhs.uk/SoO)  
Register <https://ct-myeloma.eventbrite.co.uk>  
Email [education.events@christie.nhs.uk](mailto:education.events@christie.nhs.uk)  
Call **0161 918 7409**  
Tweet [@TheChristieSoO](https://twitter.com/TheChristieSoO)

## Key Themes

To treat C.R.A.B in accordance to clinical guidance

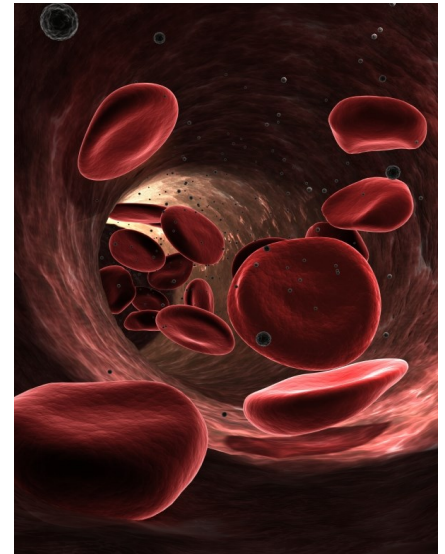
## Intended Audience

Nursing and other allied health professionals looking after haematology patients

## Fees

**£90** General Admission  
**£80** Early Bird  
**£50** Christie Staff

To register click [here](#)



## Sponsors

This event is supported by educational grants from the following companies who will be exhibiting with trade stands. They have had no input into the agenda or selection of topics or speakers



**AMGEN**

Oncology

[www.amgenoncology.co.uk](http://www.amgenoncology.co.uk)



**TEVA**

**UK**

Teva UK Limited

## Agenda – Keeping the CRAB at bay: myeloma exposed

<b>08.30</b>	<b>Registration &amp; coffee</b>	<b>13.10</b>	<b>Lunch</b>
<b>08.50</b>	Chairperson's welcome	<b>13.50</b>	<b>Managing bone health for myeloma</b> <b>Susanne Selvadurai</b> - Physiotherapy Consultant, Royal National Orthopaedic Hospital
<b>09.00</b>	<b>Diagnosis</b> <b>Amy Sinocola</b> - Specialist Nurse, Central Manchester University Hospitals	<b>14.30</b>	<b>Radiotherapy and plasma cell neoplasms</b> <b>Dr Maggie Harris</b> - Consultant with special interest in Lung Cancer and Lymphoma, The Christie
<b>09.30</b>	<b>Managing anaemia in myeloma from a transfusion perspective</b> <b>Lorna Diggory</b> - Deputy Transfusion Practitioner, The Christie	<b>14.50</b>	<b>Ask the expert - question time in smaller groups</b> <b>Dr Jim Cavet</b> Consultant, The Christie <b>Dr Samar Kulkarni</b> Consultant Haematologist, The Christie <b>Anne-Marie Kelly</b> Myeloma Nurse Specialist, The Christie
<b>10.00</b>	<b>Managing myeloma from an out-patient perspective</b> <b>Susan Blair</b> - Senior Sister, The Christie	<b>15.50</b>	<b>Adherence to medication</b> <b>Sarah Henshaw</b> Myeloma CNS, Nottingham University Hospitals
<b>10.25</b>	<b>Clinical trials in myeloma</b> <b>Tamara Garcialopez</b> - Senior Clinical Research Nurse, The Christie	<b>16.00</b>	<b>Finish</b>
<b>10.50</b>	<b>Coffee Break</b>		
<b>11.10</b>	<b>Case studies</b> <b>Dr Rachel Brown</b> - Consultant Haematologist, Central Manchester University Hospitals		
<b>11.50</b>	<b>Nephrology and myeloma</b> <b>Dr Jennifer Pinney</b> - Consultant Nephrologist, University Hospitals Birmingham		
<b>12.30</b>	<b>Managing myeloma from a cardiology perspective</b> <b>Dr Chris Plummer</b> - Consultant Cardiologist, The Newcastle upon Tyne Hospitals		

### Sponsors

