



Endometrial Cancer Study Day

Monday 23rd January 2017

Education Centre (Dept 17), The Christie, Manchester, M20 4BX

A multidisciplinary examination of the patients journey from diagnosis to follow up care

Key Themes

- Overview of current treatment modalities from diagnosis onwards
- Illustrating the treatment pathway for endometrial cancer

Topics to be covered

- Diagnosis
- Staging
- Radiotherapy management
- Trials available
- Surgical management

Intended Audience

Multidisciplinary team members of all levels of experience

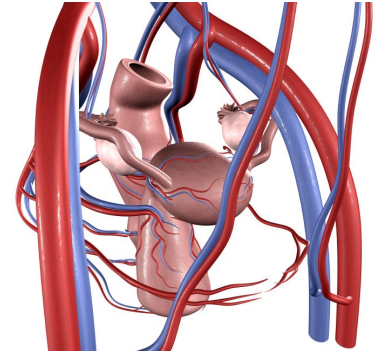
Further information

Visit www.christie.nhs.uk/SoO
Register endometrialcancer.eventbrite.co.uk
Email education.events@christie.nhs.uk
Call **0161 918 7409** or Tweet [@TheChristieSoO](https://twitter.com/TheChristieSoO)

Gynaecology Study Day: Endometrial Cancer

Introduction

The day will explore and examine a patient's journey from diagnosis to follow-up care whilst informing the multidisciplinary attendees on current available treatments and future developments



Key Themes

- Overview of current treatment modalities from diagnosis onwards
- Illustrating the treatment pathway for endometrial cancer

Learning outcomes

On completion of this course, participants will be able to:

- Give an overview of current up-to-date treatment options for endometrial patients

Topics to be covered

- Diagnosis
- Staging
- Radiotherapy management
- Trials available
- Surgical management

Target Audience

The day is aimed at all members of the multidisciplinary team involved in the care of patients with endometrial cancer and is suitable for all levels of experience. It presents an excellent opportunity to network and discover what is new in endometrial cancer

Fees

£90/£50

To register click [here](#)



09.00 Registration and coffee

09.40 Welcome

Chelsey Thackeray - Clinical Research Nurse, The Christie

Catherine Rogers - National Cancer Research Network, The Christie

09.45 Overview of endometrial cancer

Dr Lisa Barraclough - Consultant in Clinical Oncology, The Christie

10.15 Systemic therapy for endometrial cancer - current treatments and clinical trials

Dr Andrew Clamp - Consultant and Honorary Senior Lecturer in Medical Oncology, The Christie

10.55 Coffee

11.20 Surgical treatment of endometrial cancer and robotics

Miss Eva Myriokefalitaki - Consultant in Gynaecological Oncology, The Christie

11.55 Problematic areas in endometrial cancer pathology

Dr Sudha Desai - Consultant Histopathologist, The Christie

12.30 Radiotherapy and brachytherapy

Dr Susan Davidson - Consultant in Clinical Oncology, The Christie

13.05 Lunch

14.05 Welcome back

14.10 Molecular stratification of endometrial cancer: implications for trials and treatment

Professor Richard Edmondson - Professor of Gynaecological Oncology, University of Manchester

14.45 Developing strategies to prevent endometrial cancer

Dr Emma Crosbie - Senior Lecturer and Honorary Consultant, The University of Manchester

15.20 Enhanced supportive care

Dr Richard Berman - Consultant in Palliative Care/Honorary Senior Lecturer, The Christie

15.55 Close