



# Haematology: Chronic Lymphocytic Leukaemia

---

**Thursday 29th June 2017**

Education Centre (Dept 17), The Christie, Manchester, M20 4BX

---

## Keynote Speakers

To be confirmed

## Further information

Visit [www.christie.nhs.uk/SoO](http://www.christie.nhs.uk/SoO)  
Register [c-i-l.eventbrite.co.uk](http://c-i-l.eventbrite.co.uk)  
Email [education.events@christie.nhs.uk](mailto:education.events@christie.nhs.uk)  
Call **0161 918 7409** or Tweet **@TheChristieSoO**

---

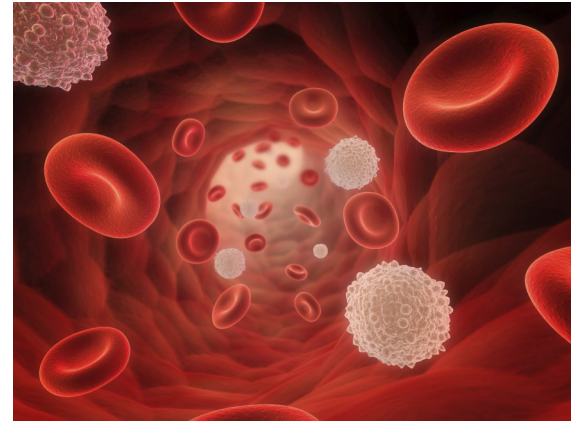
## Sponsors

This event is supported by educational grants from the above companies who will be exhibiting with trade stands. They have had no input into the agenda or selection of topics or speakers.



## Introduction

This education day is for nurses and other allied health professionals caring for patients with chronic lymphocytic leukaemia (CLL) and will cover the diagnosis and management of CLL, case studies and key nursing issues



## Learning outcomes

The day will expand basic and intermediate level knowledge of nurses caring for haematology patients which can then be applied in the clinical environment

## Key Themes

- Complexities of CLL
- Infective complications
- Clinical trials and treatment options
- Case studies
- Quality of life in CLL
- Anxiety
- Managing fatigue

## Target audience

Nurses and other allied health professionals looking after haematology patients

## Fees

**£90** (General Admission)

**£80** (Early Bird—book before 29th March 2017)

**£50** (Christie Staff Only)

Click [here](#) to register

## Sponsors