

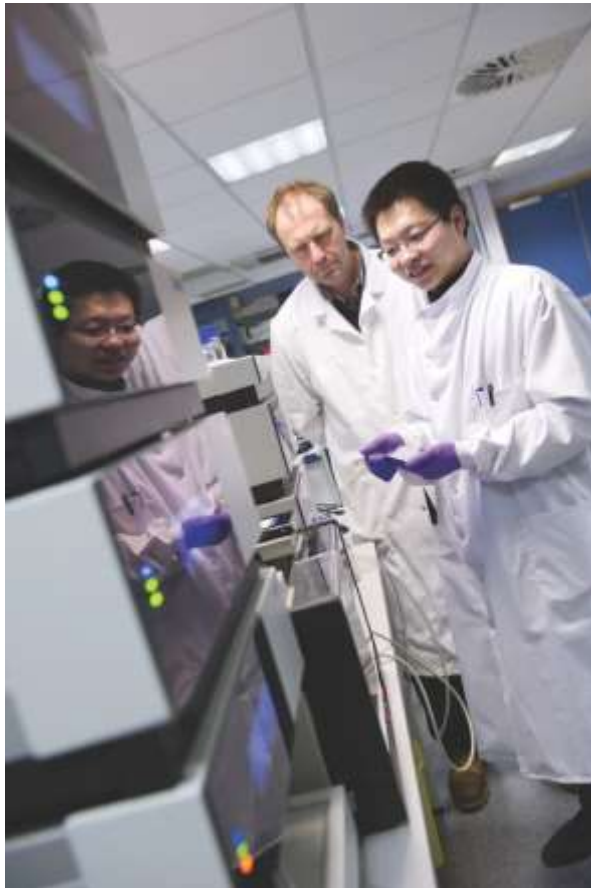
Welcome



Professor Sue Gibson

Director of Imperial College Graduate School

Imperial by numbers



15,931 full and part-time students
(2013–14)

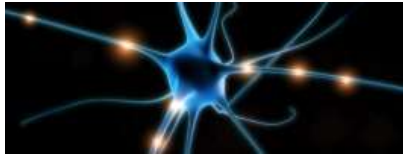
- 8,931 undergraduates
- 3,536 taught postgraduates
- 3,464 research postgraduates

Introducing Imperial College London

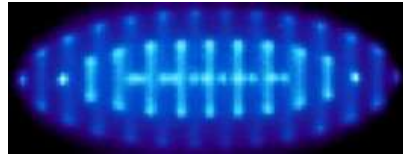


- at full strength, CDTs will represent *ca* 20% of the College PGR population
- catalysed collaboration both internally and externally
- typically 20-30 companies involved per CDT

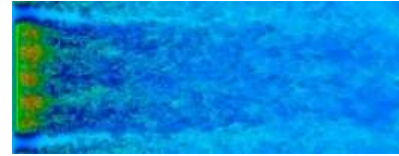
EPSRC Centres for Doctoral Training



Neurotechnology
for Life and Health



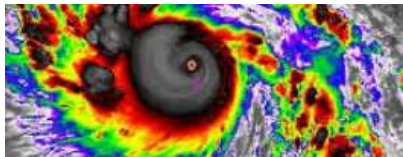
Controlled
Quantum Dynamics



Fluid Dynamics



Physical Sciences Innovation
in Chemical Biology for
Bio-industry and Healthcare



Mathematics
of Planet Earth



Nuclear Energy



Theory and Simulation
of Materials



High Performance
Embedded
and Distributed Systems



Sustainable
Civil Engineering



Advanced
Characterisation
of Materials



Nondestructive Evaluation



Plastic Electronic
Materials

Support for postgraduates

Graduate School

Provides the central transferable skills programme and arranges a programme of social and academic events

Strong interactions between CDTs including through the Graduate School CDT/DTP Committee

